



## EX3216H-A05/785-5x10/Y1697 Safety stitch machine EX3216H for extra wide seams of -5x10, i.e. 15 mm seam width.

Recently we have received some inquiries for extra wide seams of 15 mm on trousers or Stretch Jeans. This

machine offers the solution for such applications. It can handle a variety of different fabrics, like trouser fabric, skirts and Stretch Jeans fabric. Basically all fabrics which can fray easily and therefore require a wider seam for a stronger seam. Since the sewing capacity, of the upper looper movement, is not the same like a standard H-Version, it is possible to sew fabric with a max. thickness of ~ 5 mm. This means it must be made clear, that no thick cross seams, like lap seams, have to be sewn on Stretch Jeans. The ultra high lift of the H-version is used to obtain the large widthways movement of the upper looper; therefore the capacity high wise is restricted.

Please, keep the sewing capacity in mind, when you sell this machine, to avoid any conflict on heavy cross seams.

## FS700, new optional available feed dogs

We would like to inform you that several kinds of feed dogs with different feed dog pitches have been introduced in order to increase feeding efficiency and prevent the damage that occurs when the fabric is fed, according to diversified sewn products. 1,25 mm tooth pitch and 2,5 mm tooth pitch have been added to the standard product of 1,8 mm.

### 1.25 mm pitch feed dog

Part No.	Description	Applicable model	Pitch
236200B12509	Main feed dog	FS701	1.25 mm
236201012509	Differential feed dog	FS701	1.25 mm
3B0001012509	Main feed dog	FS703A	1.25 mm
3G0001012509	Differential feed dog	FS703A	1.25 mm
3B0002025009	Main feed dog	FS703B	2.5 mm
3G0002025009	Differential feed dog	FS703B	2.5 mm

- Effective for light weight and soft fabrics that tend to be damaged when they are fed
- Two types of feed dogs have been introduced. One is for flat gauges of the FS700-G0, G1, G3 and G4, and another is for stepped gauge of the FS703A-G4, which has the 1mm stepped gauge.

## 2,5 mm pitch feed dog

- Feeding efficiency is increased when heavy weight fabrics, such as fleece are sewn,
- Feed dogs for the FS703B-G4 with a 1,5 mm stepped gauge have been introduced

Please, also refer to the TC-informations TC-D0077 for above subject (PE-WebPage).

### Further information

- ✓ on new presser foot shoes you find in TC-D0079
- ✓ one new fabric guide you see in TC-D0080



## FS700, new optional available chaining fingers

We would like to inform you that two types of needle plate chaining-off fingers have been introduced in order to respond to diversified sewing specifications.

They are **different in length and thickness** from the standard type.

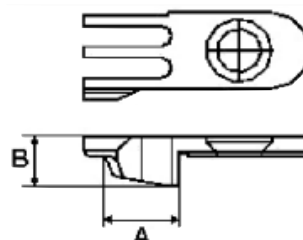
### 1. Shorter finger

The needle thread can be released properly from the needle plate chaining-off finger, so the needle thread will be well tightened. This feature is effective for fine stitch length, and prevents seam jamming due to improper release of the needle thread.

### 2. Thicker finger

This finger prevents the needle thread from becoming tangled, and the looper thread is sufficiently supplied, even with woolly threads.

	Length (A)	Thickness (B)
Standard	7,1 mm	2,75 mm
Short	6,8 mm	2,75 mm
Thick	7,1 mm	3,0 mm



**Short finger for 5.2 mm**  
**not available**

**Short finger for 6.0 mm**  
[236101A46009](#)

**Thick finger for 5,2 mm**  
[236101C45209](#)

**Thick finger for 6,0 mm**  
[236101C46009](#)

You can find information in TC-D0081 on our WebPage, in the customer area.